

**Unit Numbers:**

**411**

**421**



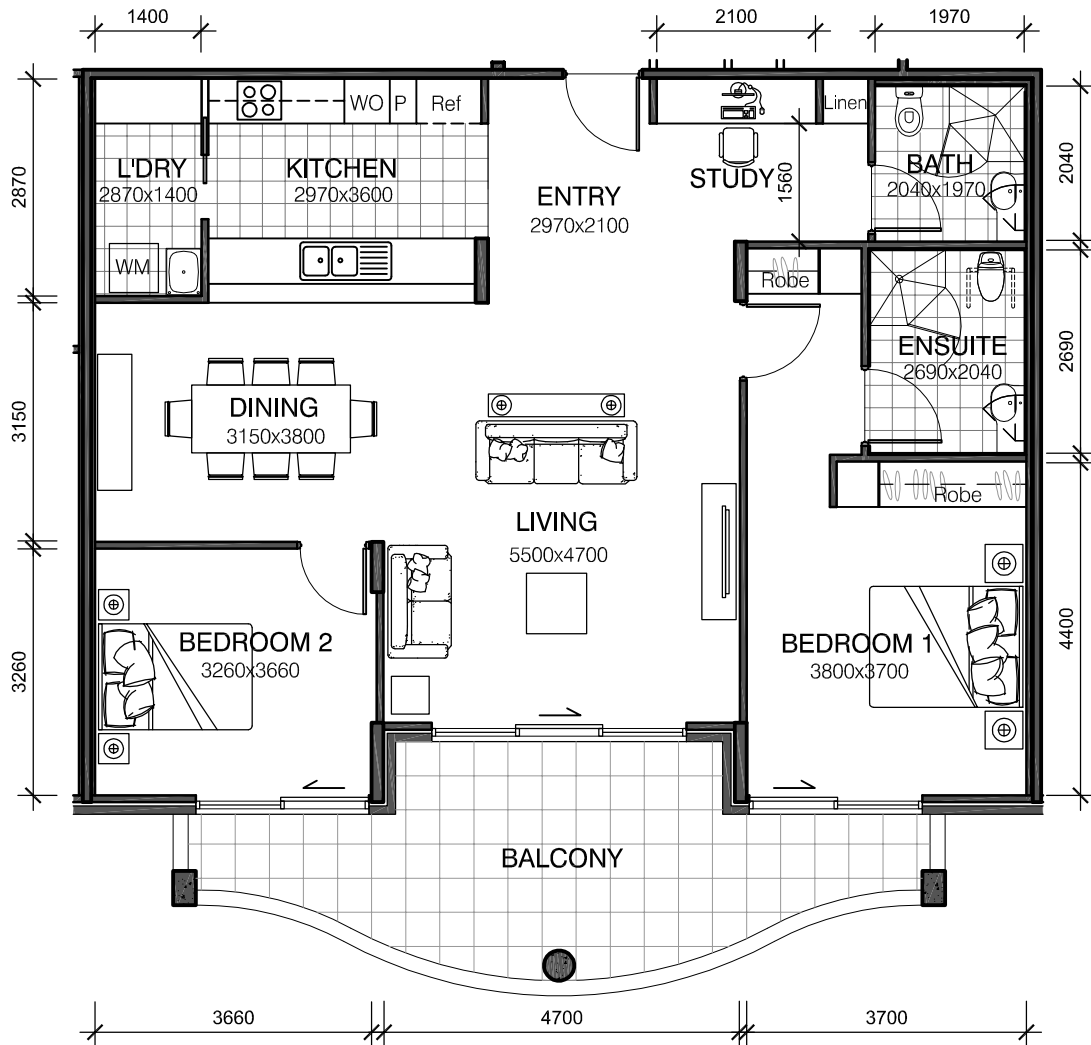
**Unit Type Y1**

Net Area (excl. perimeter walls) = 130m<sup>2</sup>  
Balcony Area = 20m<sup>2</sup>  
Total Area = 150m<sup>2</sup>

**Notes:**

Furniture layout indicative only  
Bedroom dimensions exclude wardrobes

**INDEPENDENT LIVING UNIT  
FLOOR PLAN**



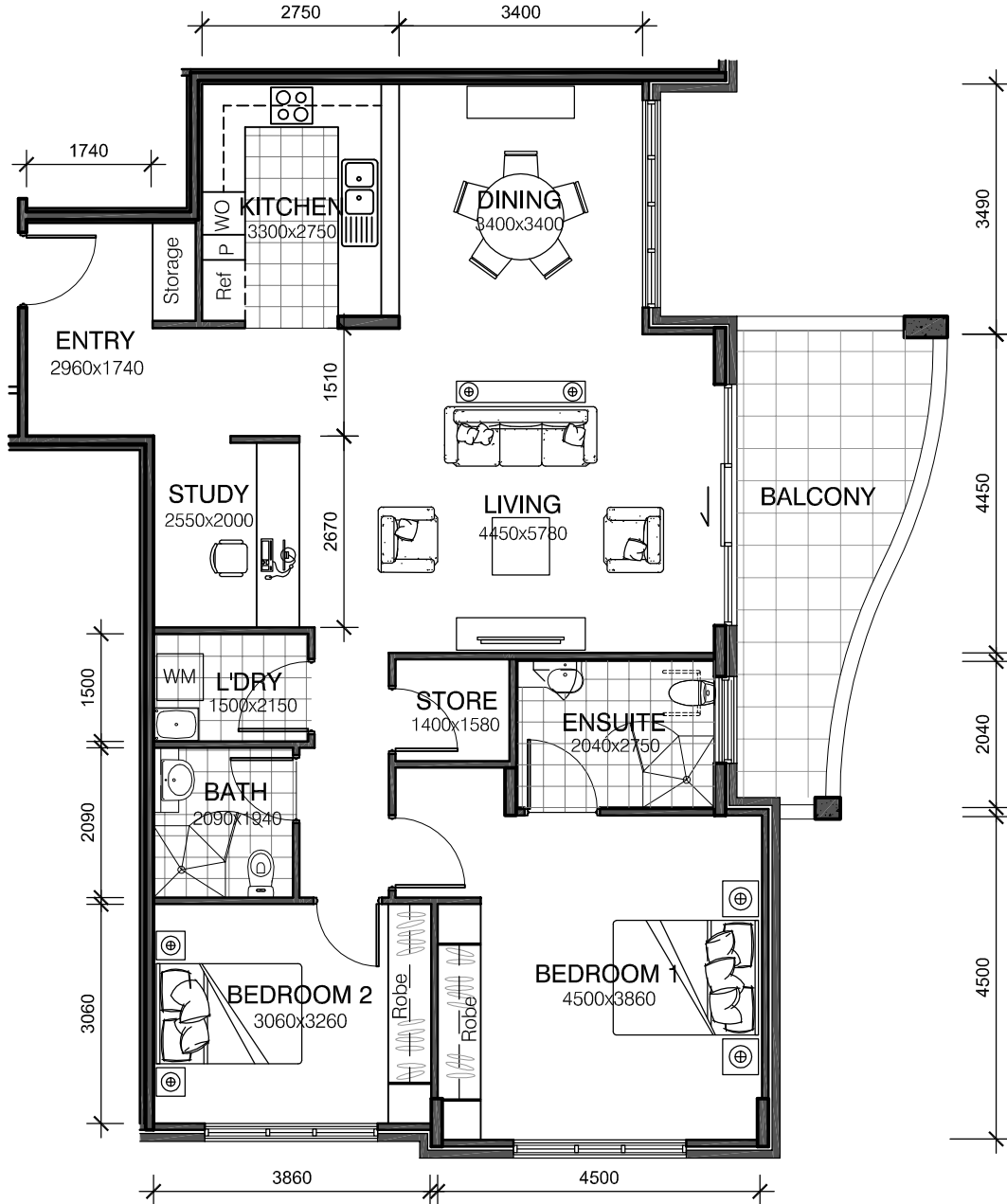
**Unit Numbers:**  
412  
422

## Unit Type Y2

Net Area (excl. perimeter walls) = 110m<sup>2</sup>  
Balcony Area = 20m<sup>2</sup>  
Total Area = 130m<sup>2</sup>

Notes:  
Furniture layout indicative only  
Bedroom dimensions exclude wardrobes





**Unit Numbers:**  
413  
423

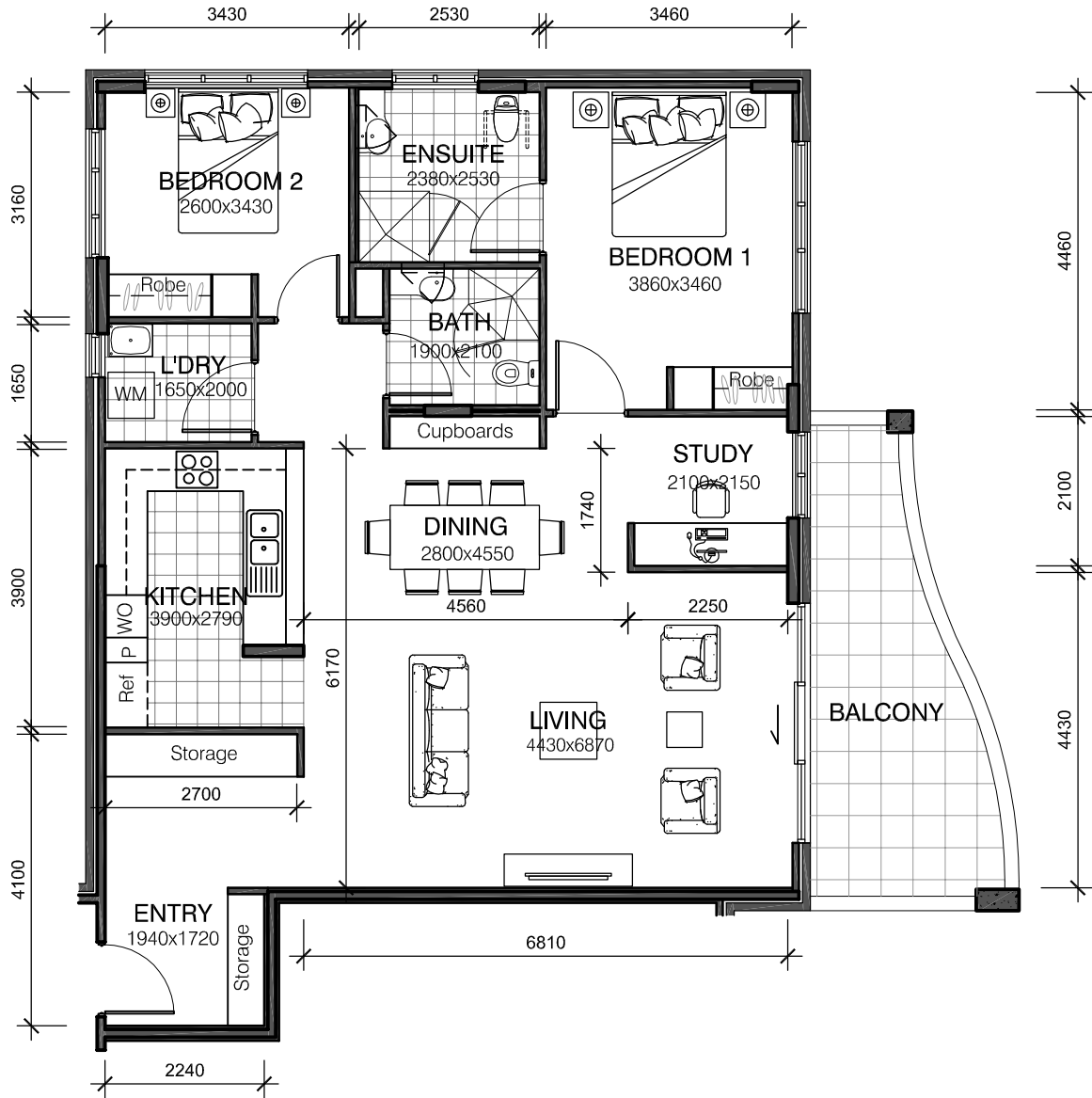


## Unit Type Y3

Net Area (excl. perimeter walls) = 117m<sup>2</sup>  
Balcony Area = 13m<sup>2</sup>  
Total Area = 130m<sup>2</sup>

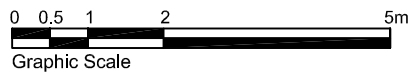
Notes:  
Furniture layout indicative only  
Bedroom dimensions exclude wardrobes

## INDEPENDENT LIVING UNIT FLOOR PLAN



**Unit Numbers:**

**414**  
**424**



**Unit Type Y4**

Net Area (excl. perimeter walls) = 112m<sup>2</sup>  
Balcony Area = 13m<sup>2</sup>  
Total Area = 125m<sup>2</sup>

Notes:  
Furniture layout indicative only  
Bedroom dimensions exclude wardrobes

**INDEPENDENT LIVING UNIT  
FLOOR PLAN**